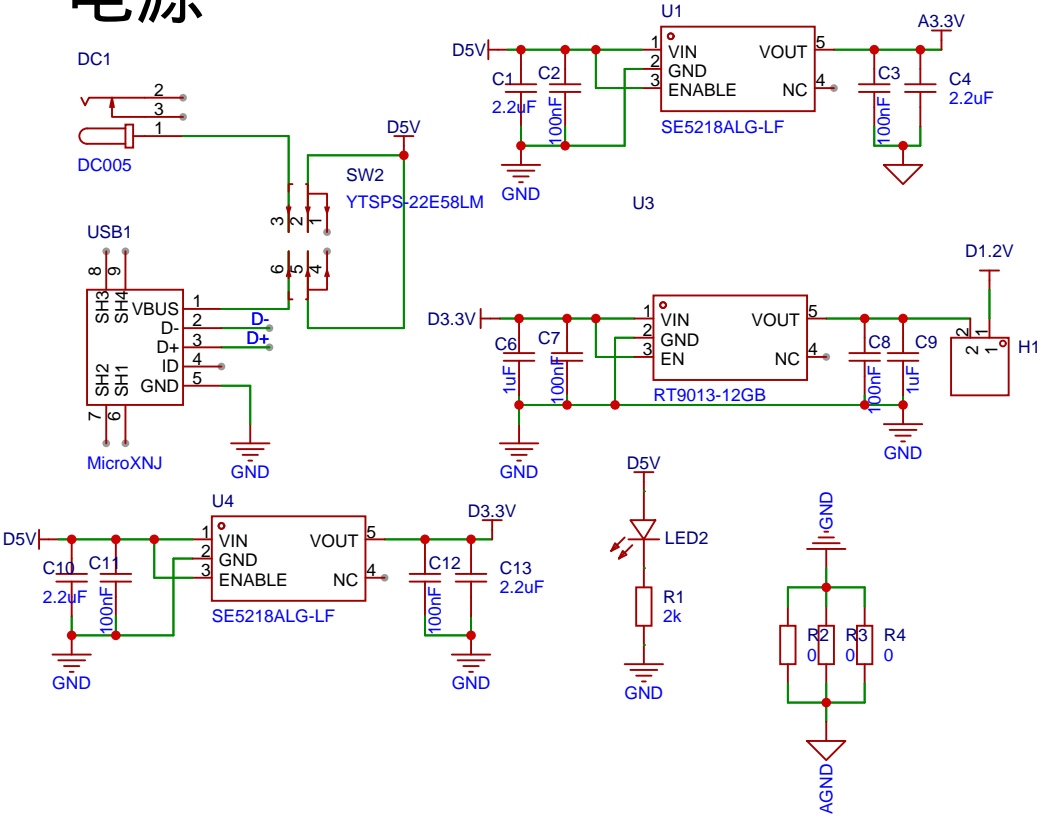
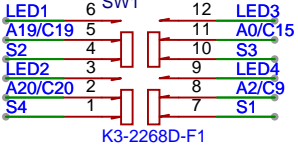


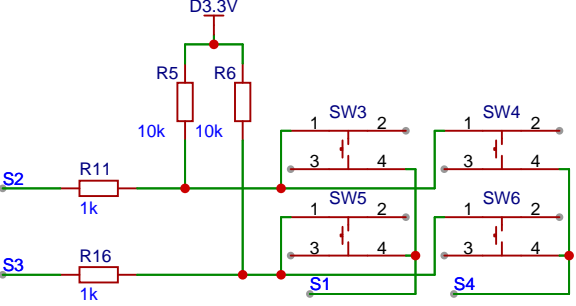
电源



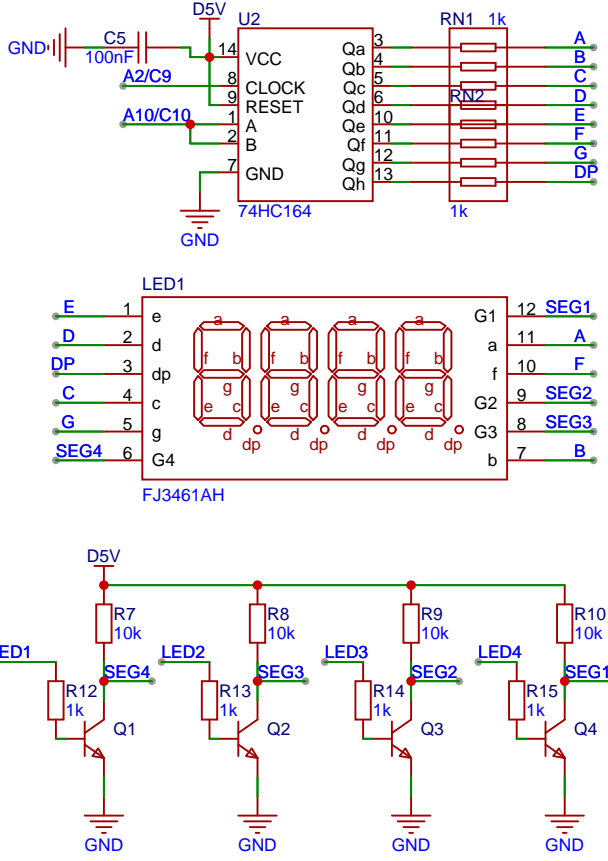
矩阵按键/数码管



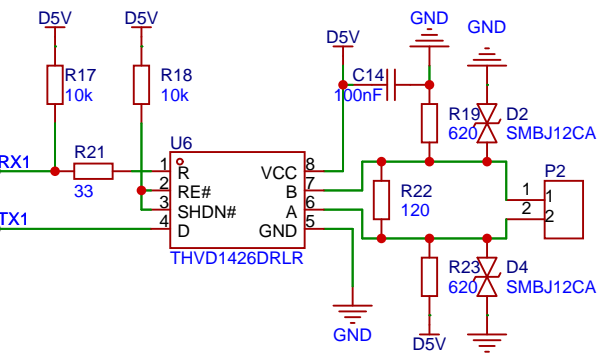
矩阵按键模块



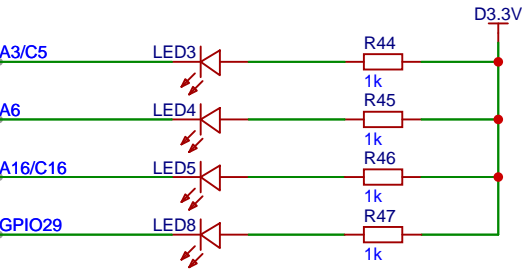
数码管显示模块



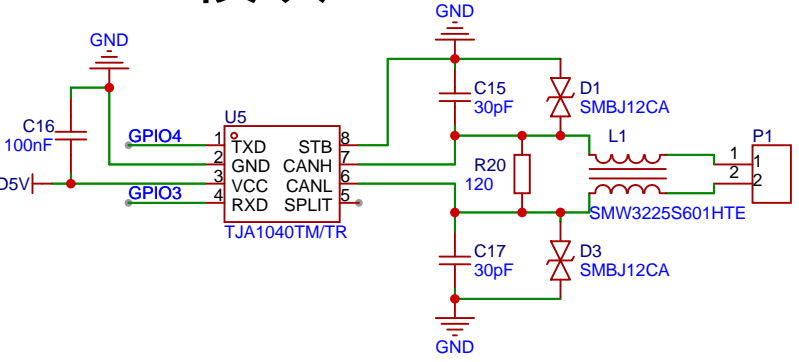
RS485模块



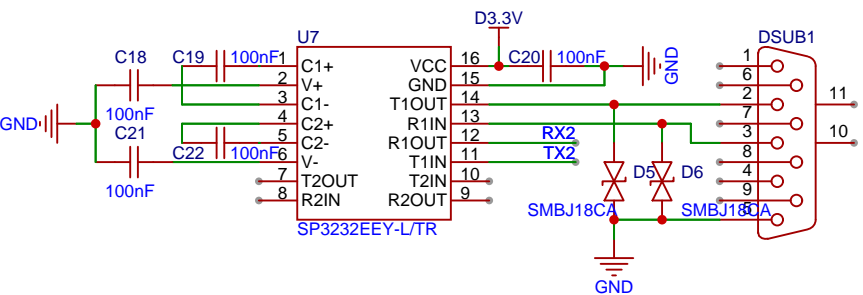
LED模块



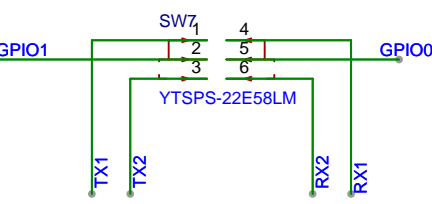
CAN模块



RS232模块

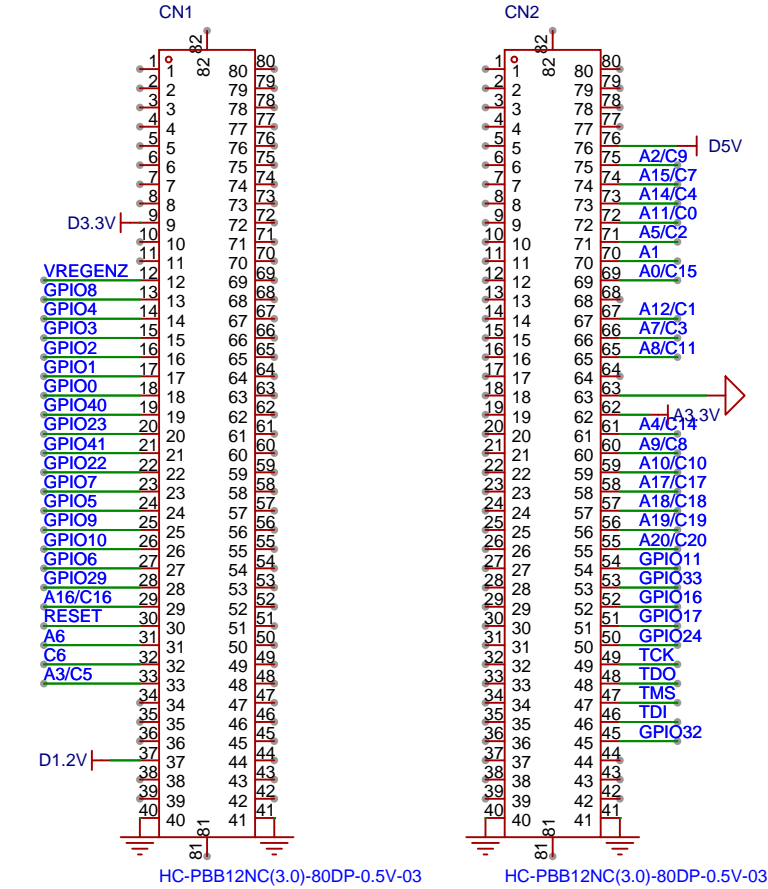


ON:RS232
OFF:RS485

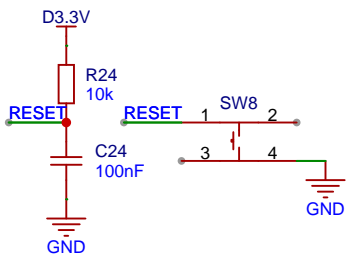


| | | | | |
|--------|---------------------|------|------------------------|------------|
| 原理图 | QXS320F280137开发板VA0 | | 创建日期 | 2025-04-14 |
| 板子 | 137开发板 | | 更新日期 | 2025-05-16 |
| 绘制 | | | 图页 | P1 |
| 审阅 | | | QXS320F280137开发评估板0507 | |
| | | 版本 | 尺寸 | 页 1 共 2 |
| 嘉立创EDA | | V1.0 | A4 | 嘉立创EDA |

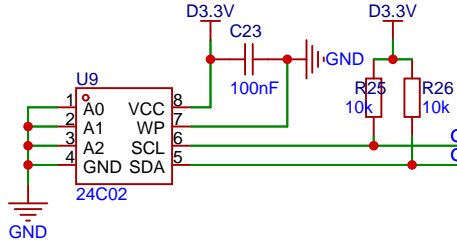
137核心模块



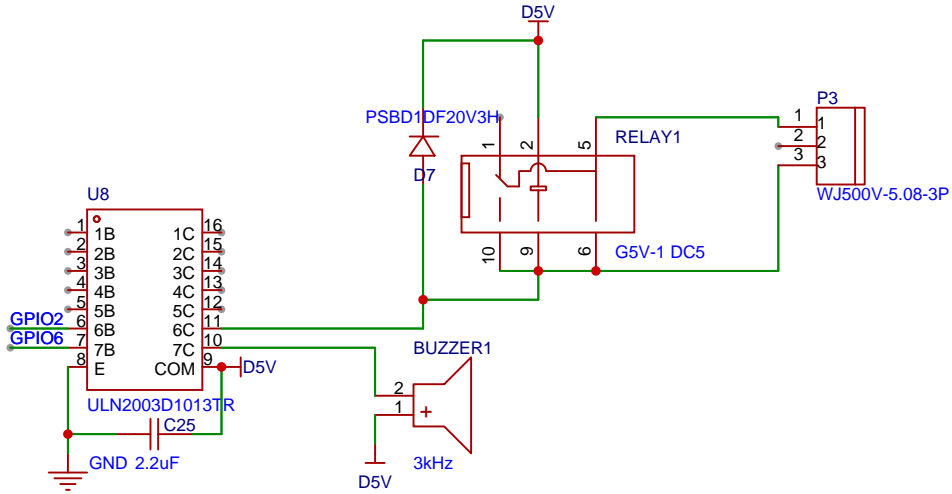
复位



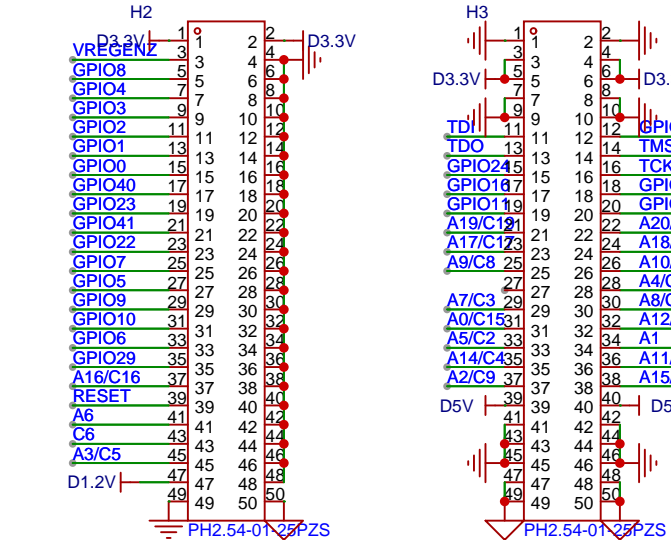
EEPROM模块



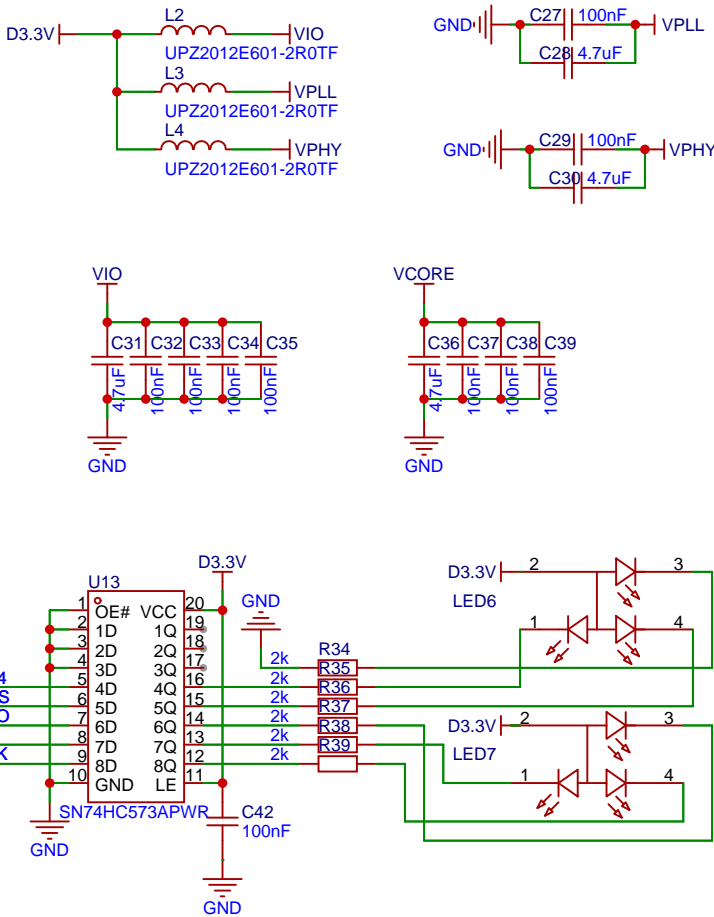
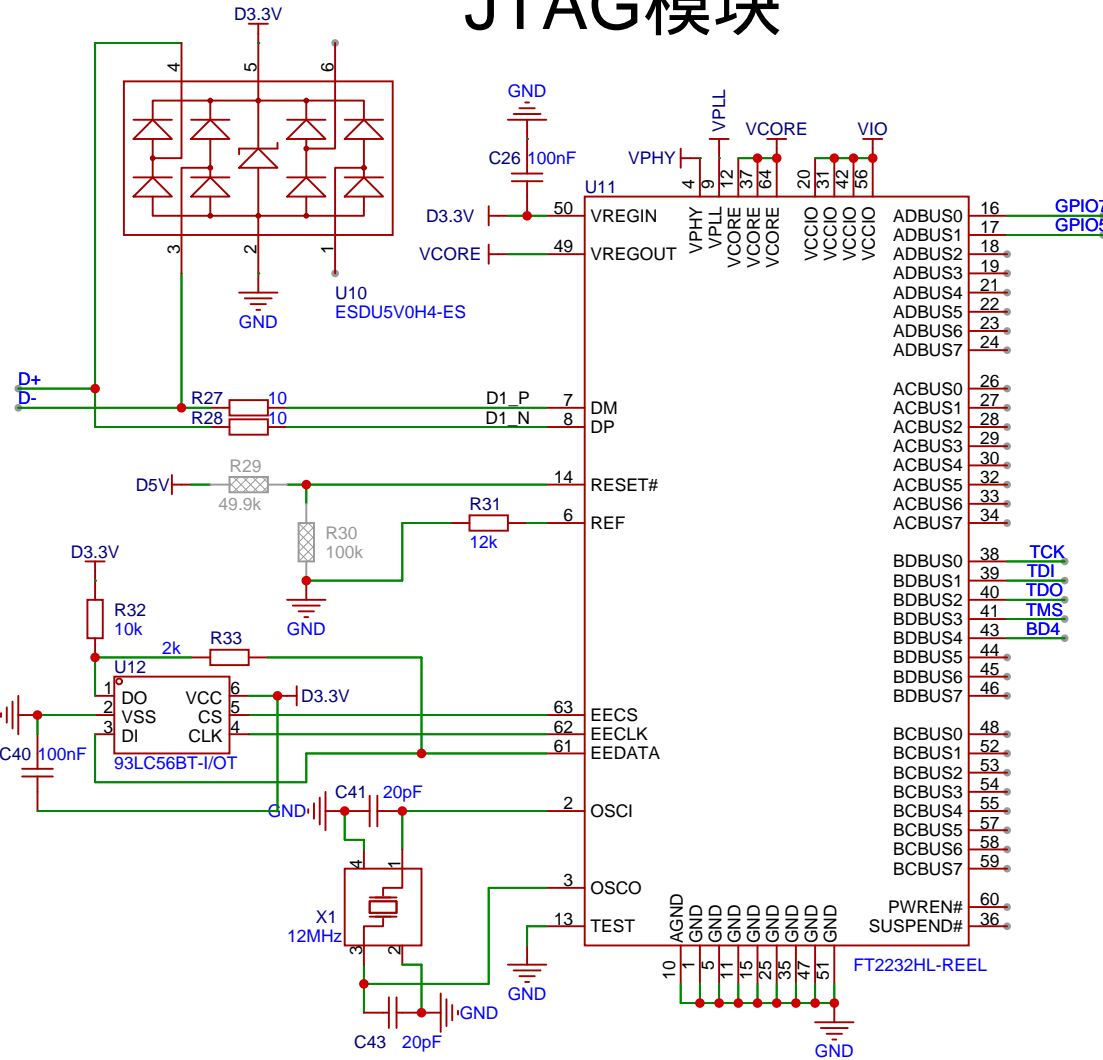
蜂鸣器，继电器驱动模块



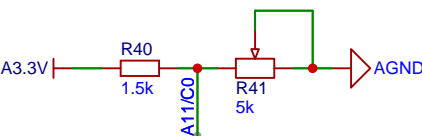
外扩接口



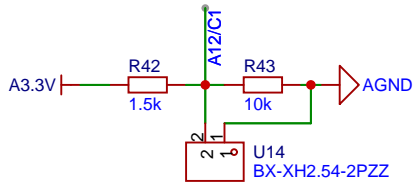
JTAG模块



ADC模块



温度采集模块



| | | | | |
|--------|---------------------|------|------------------------|------------|
| 原理图 | QXS320F280137开发板VA0 | | 创建日期 | 2025-04-15 |
| 板子 | 137开发板 | | 更新日期 | 2025-05-16 |
| 绘制 | | | 图页 | P2 |
| 审阅 | | | QXS320F280137开发评估板0507 | |
| | | 版本 | 尺寸 | 页 2 共 2 |
| 嘉立创EDA | | V1.0 | A4 | 嘉立创EDA |